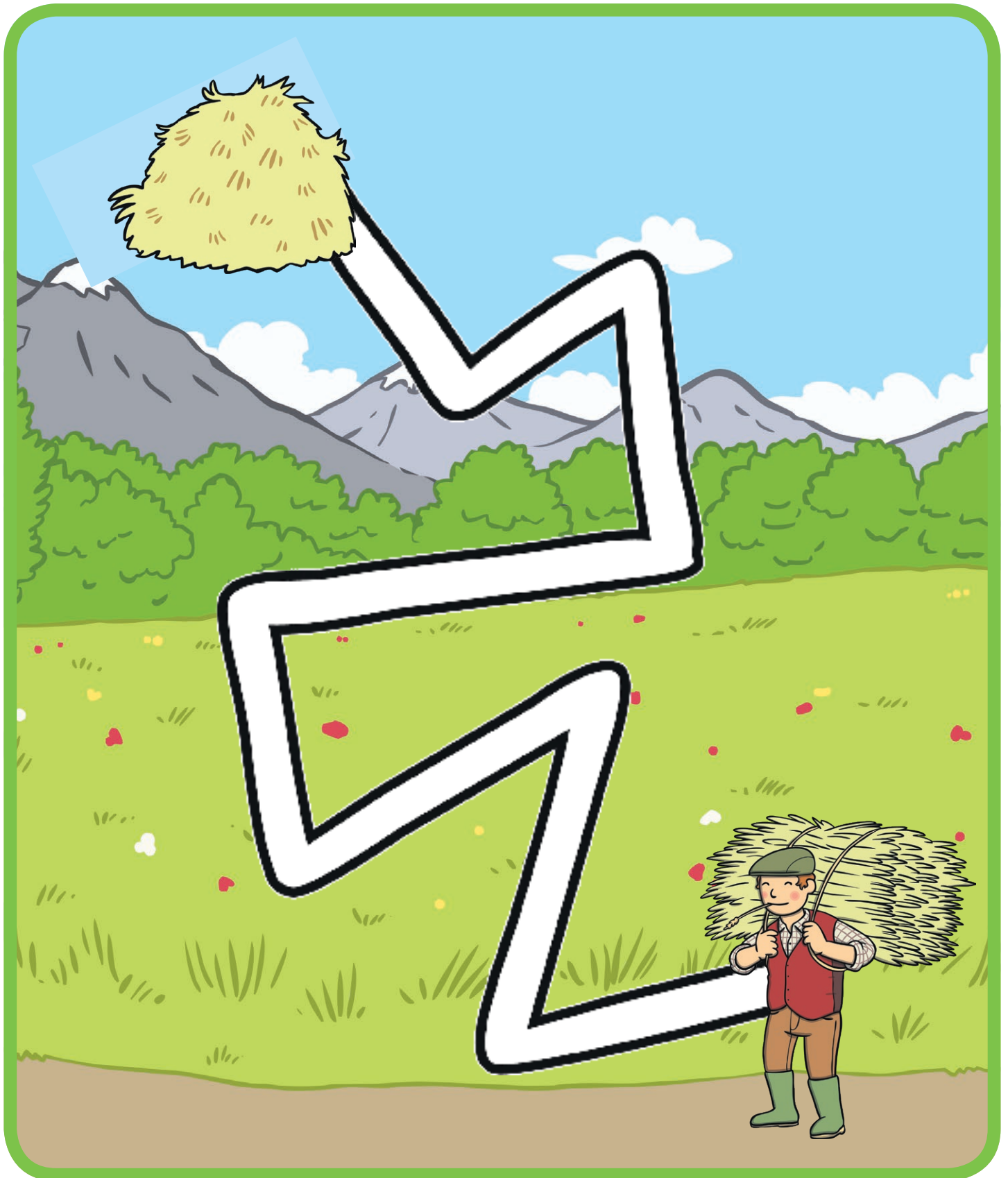


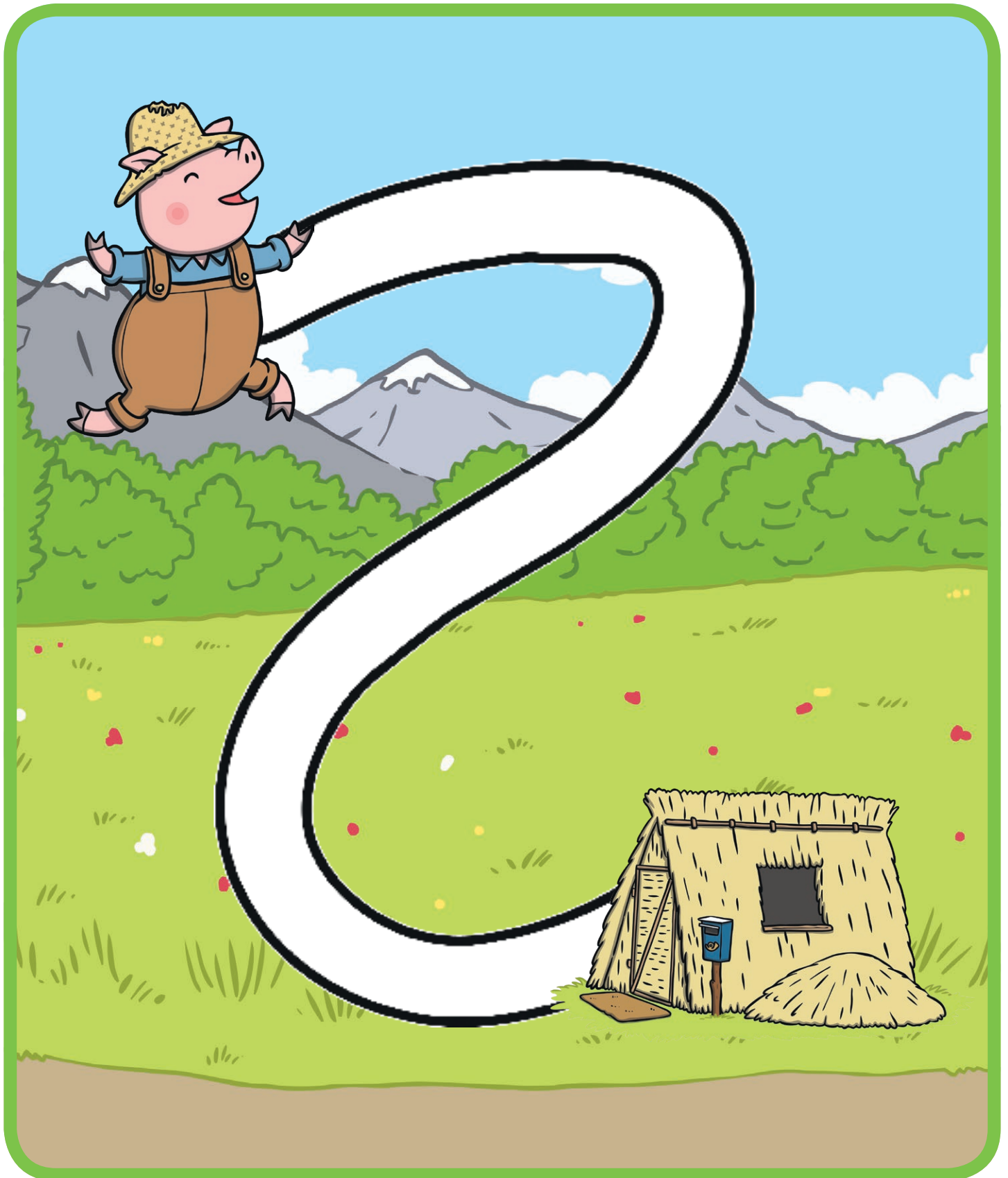
The Three Little Pigs

Use your pencil to draw a line to connect the haystack and the farmer.
Try to stay in the middle of the path.



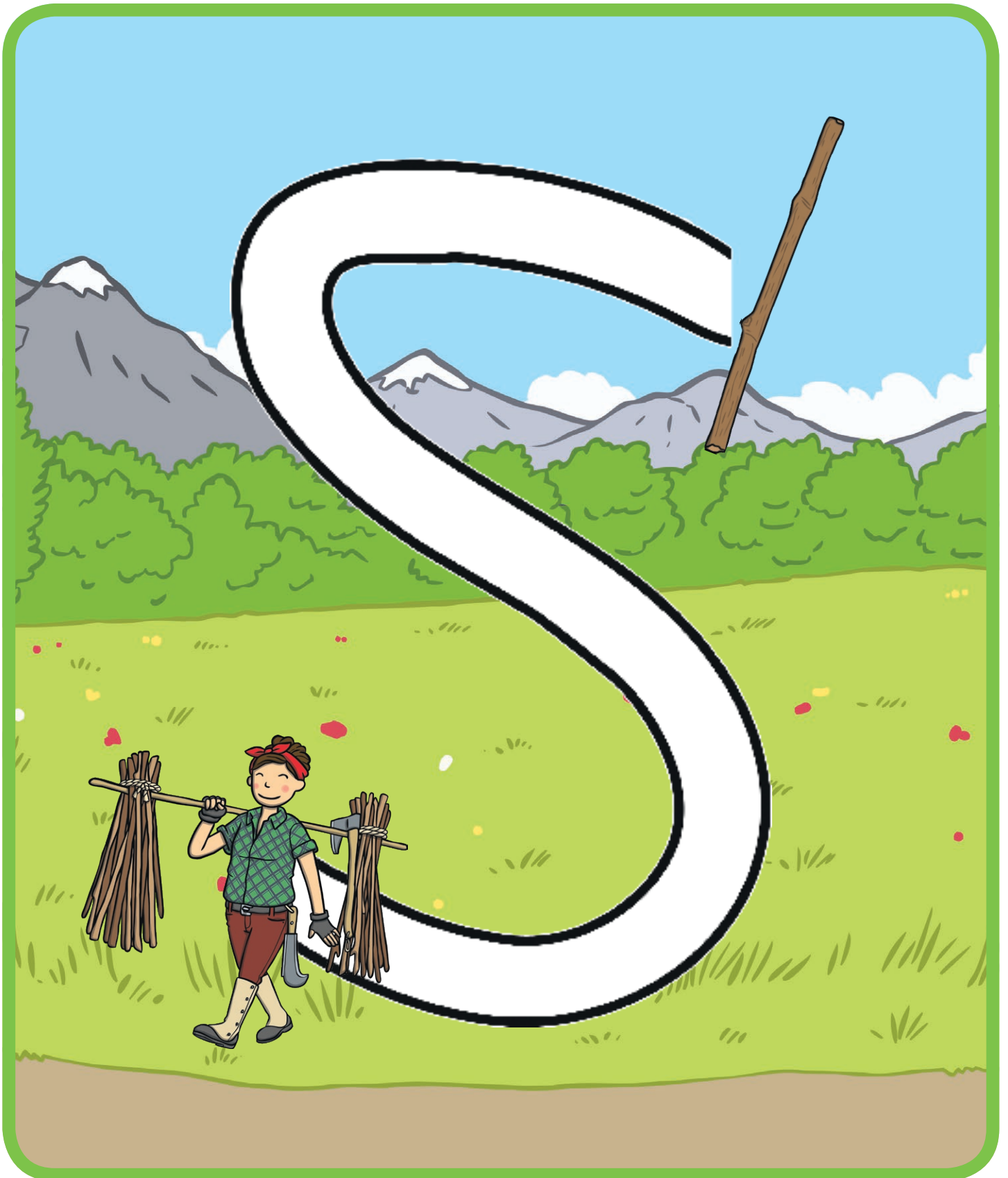
The Three Little Pigs

Use your pencil to draw a line to connect the Hayseed Pig and the straw house. Try to stay in the middle of the path.



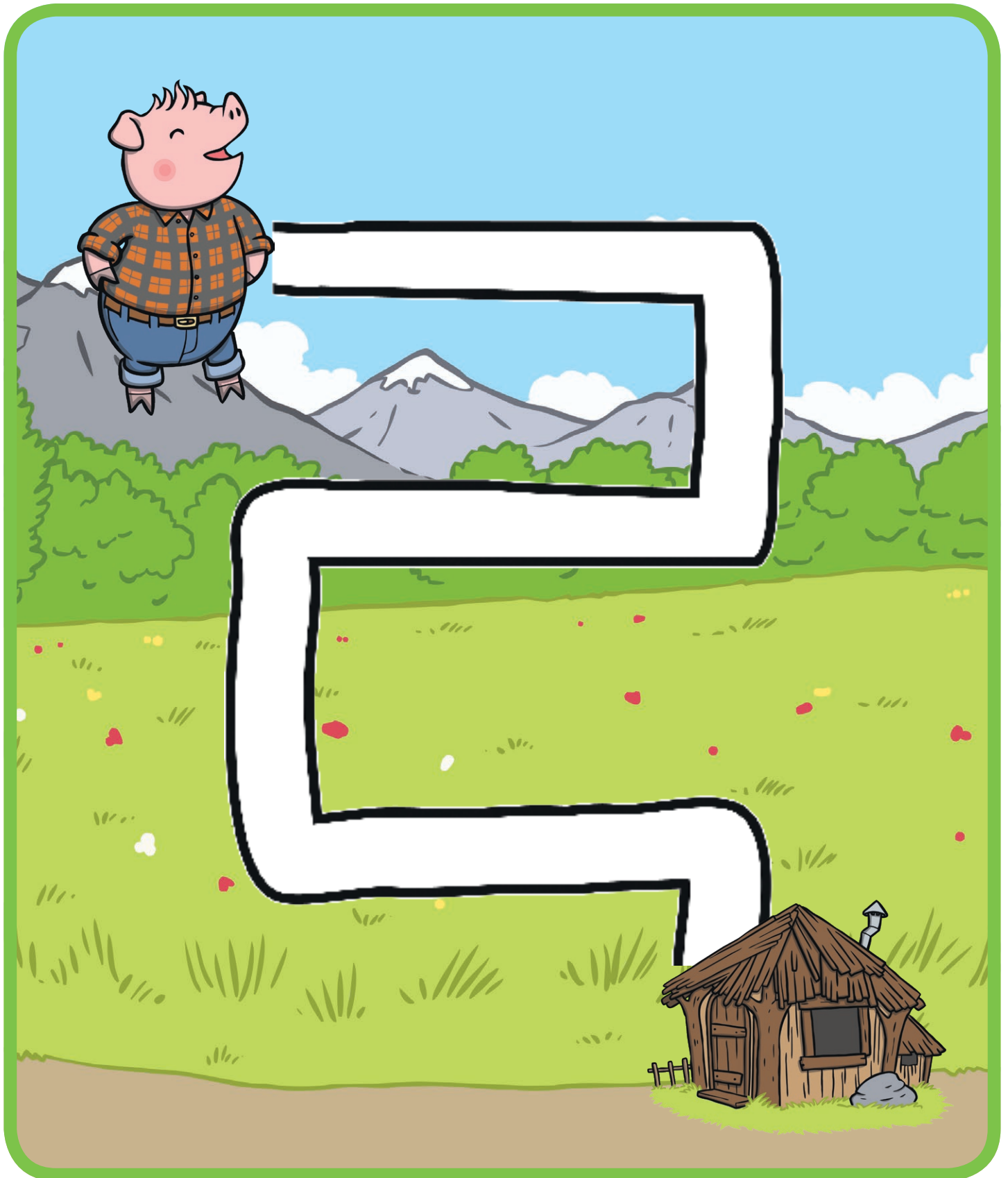
The Three Little Pigs

Use your pencil to draw a line to connect the stick and the Woodcutter.
Try to stay in the middle of the path.



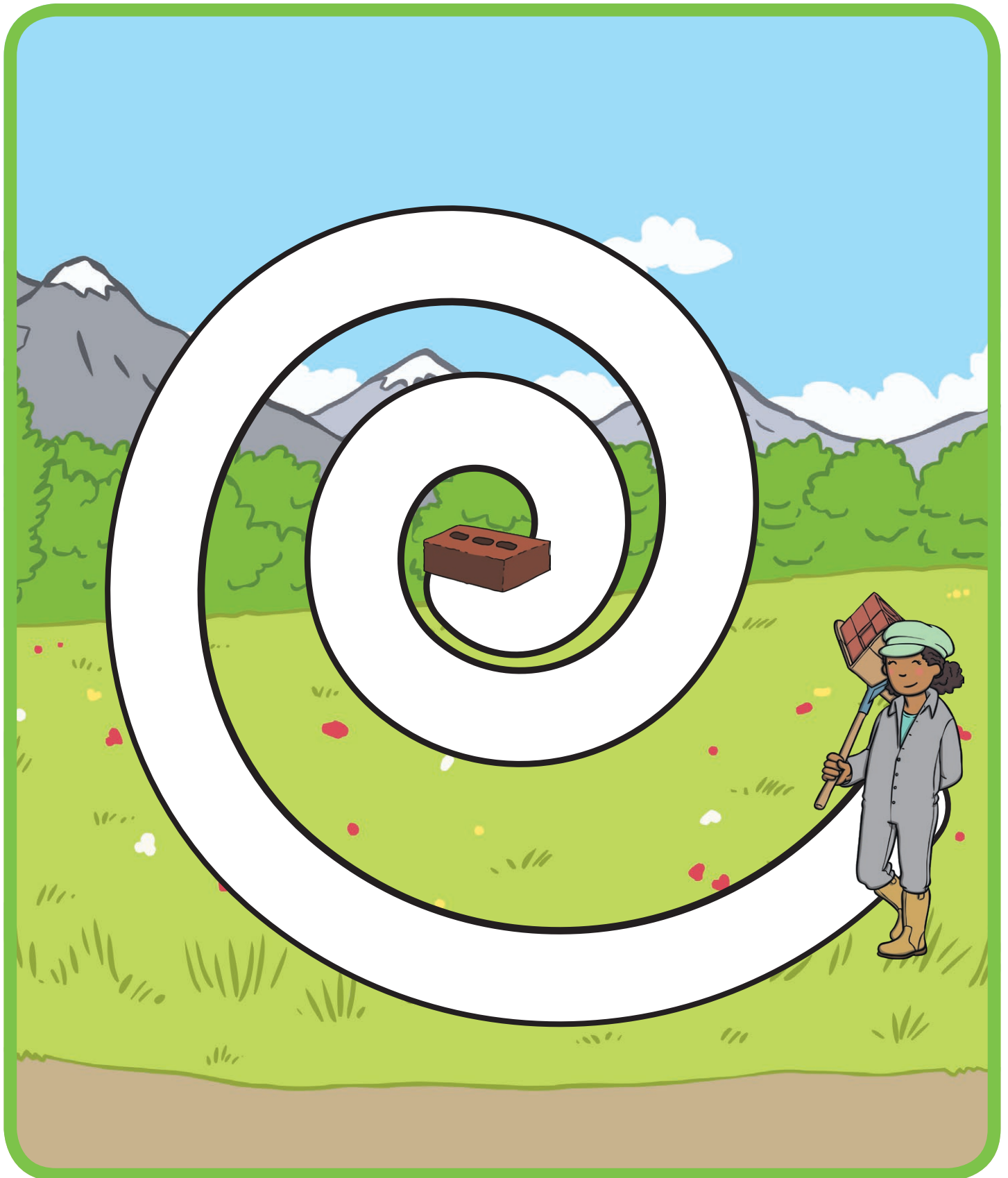
The Three Little Pigs

Use your pencil to draw a line to connect the Carpenter Pig and the stick House. Try to stay in the middle of the path.



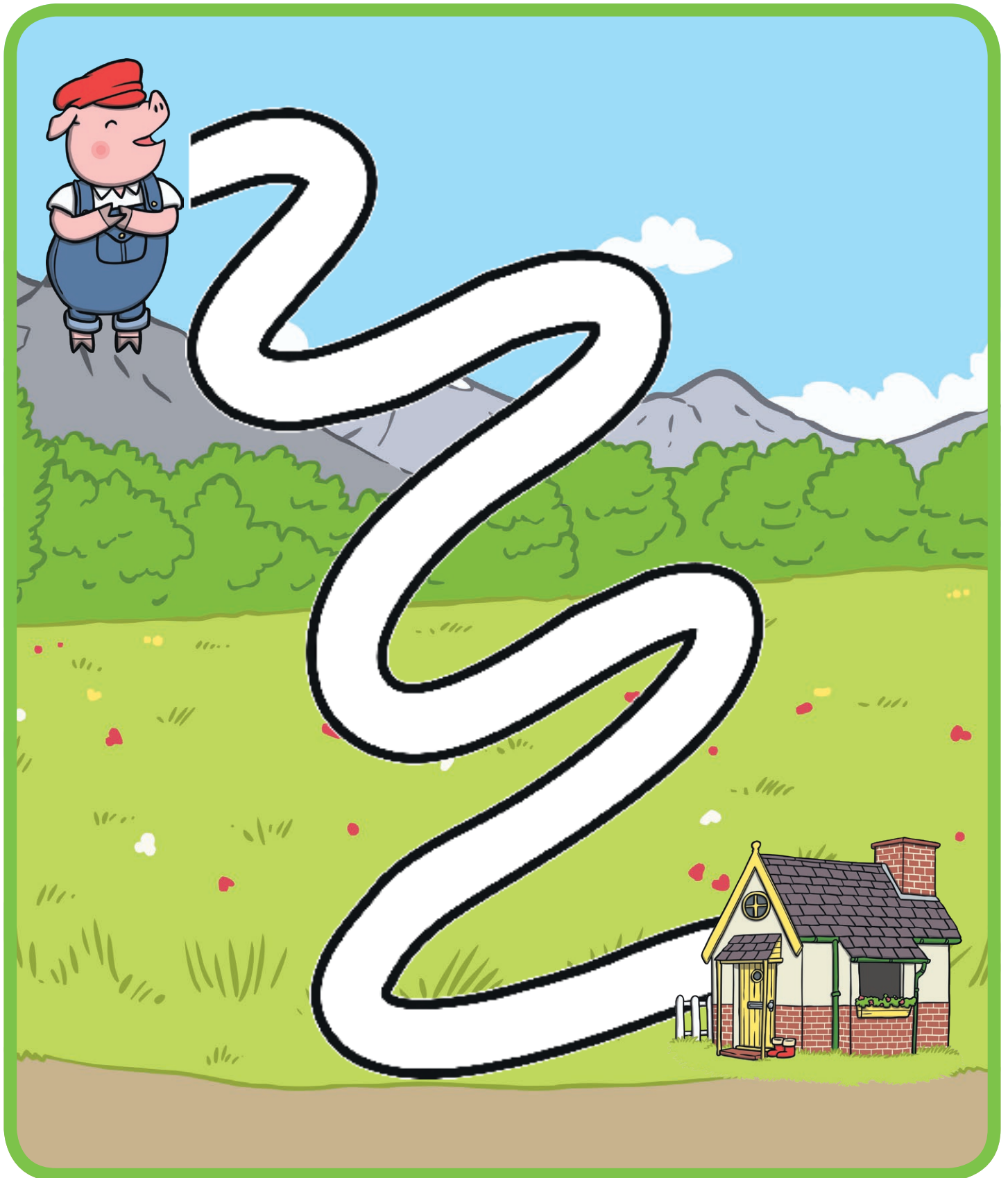
The Three Little Pigs

Use your pencil to draw a line to connect the Brick and the Builder.
Try to stay in the middle of the path.



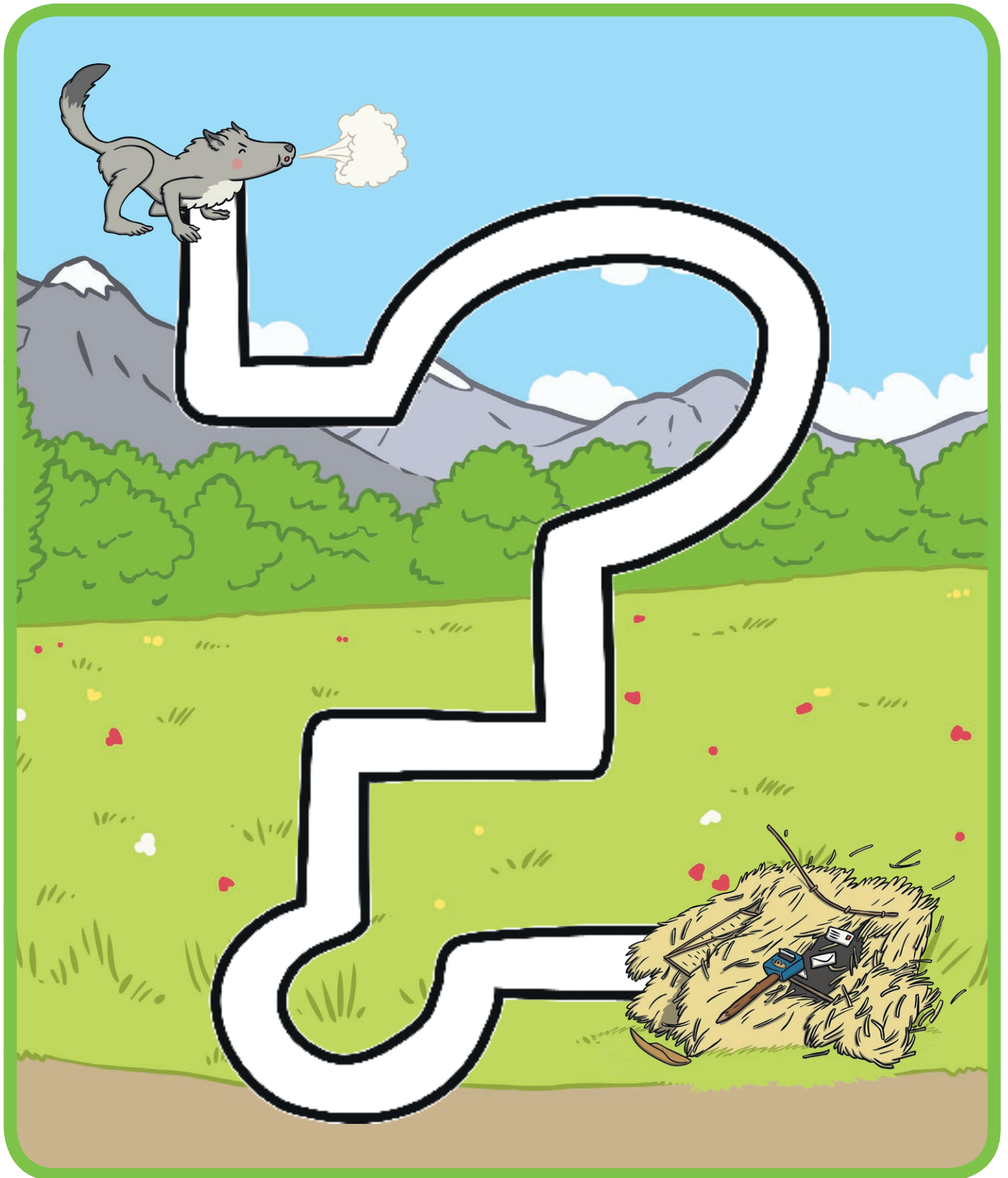
The Three Little Pigs

Use your pencil to draw a line to connect the Bricklayer Pig and the brick house. Try to stay in the middle of the path.



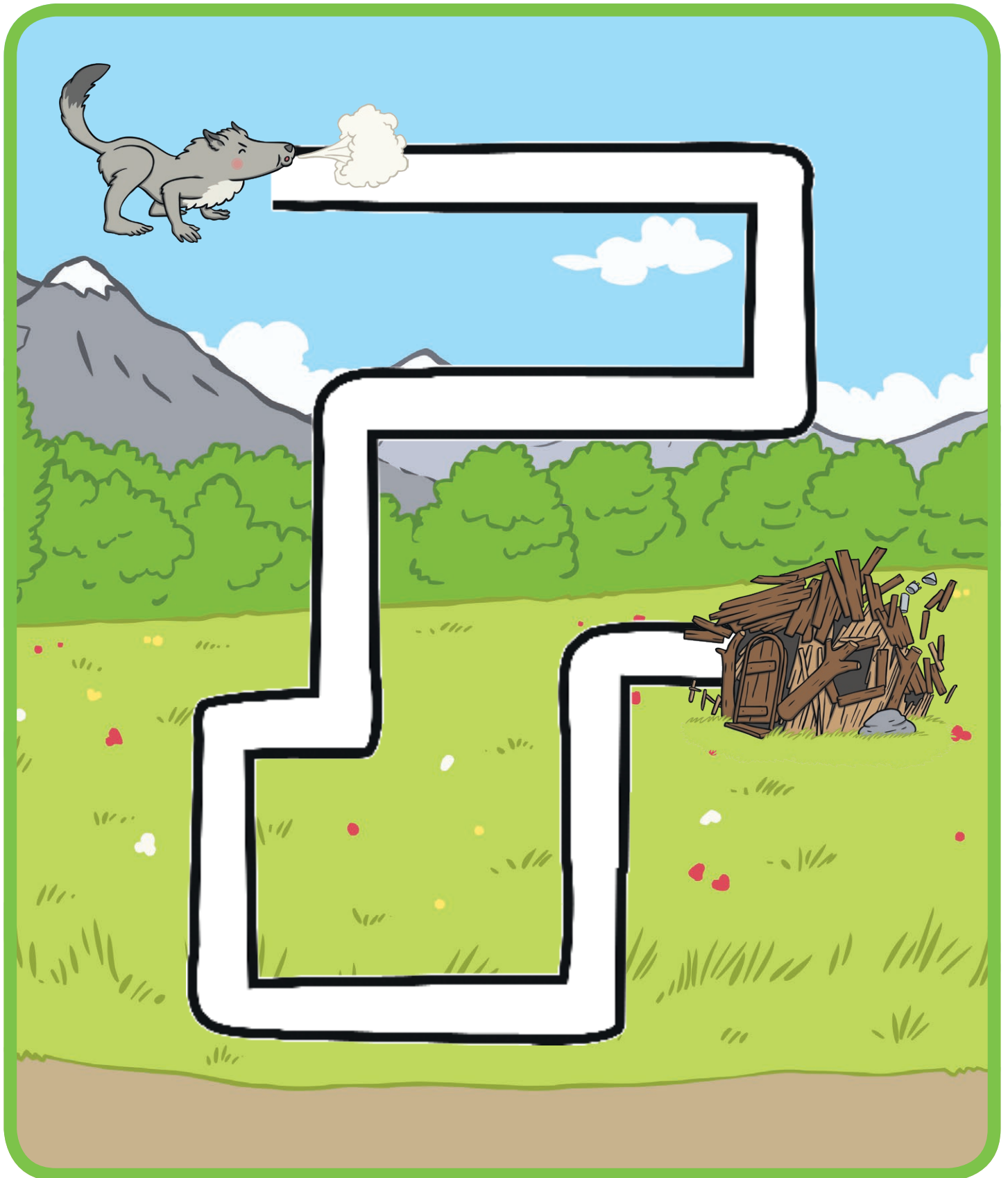
The Three Little Pigs

Use your pencil to draw a line to connect the Big Bad Wolf and the straw house. Try to stay in the middle of the path.



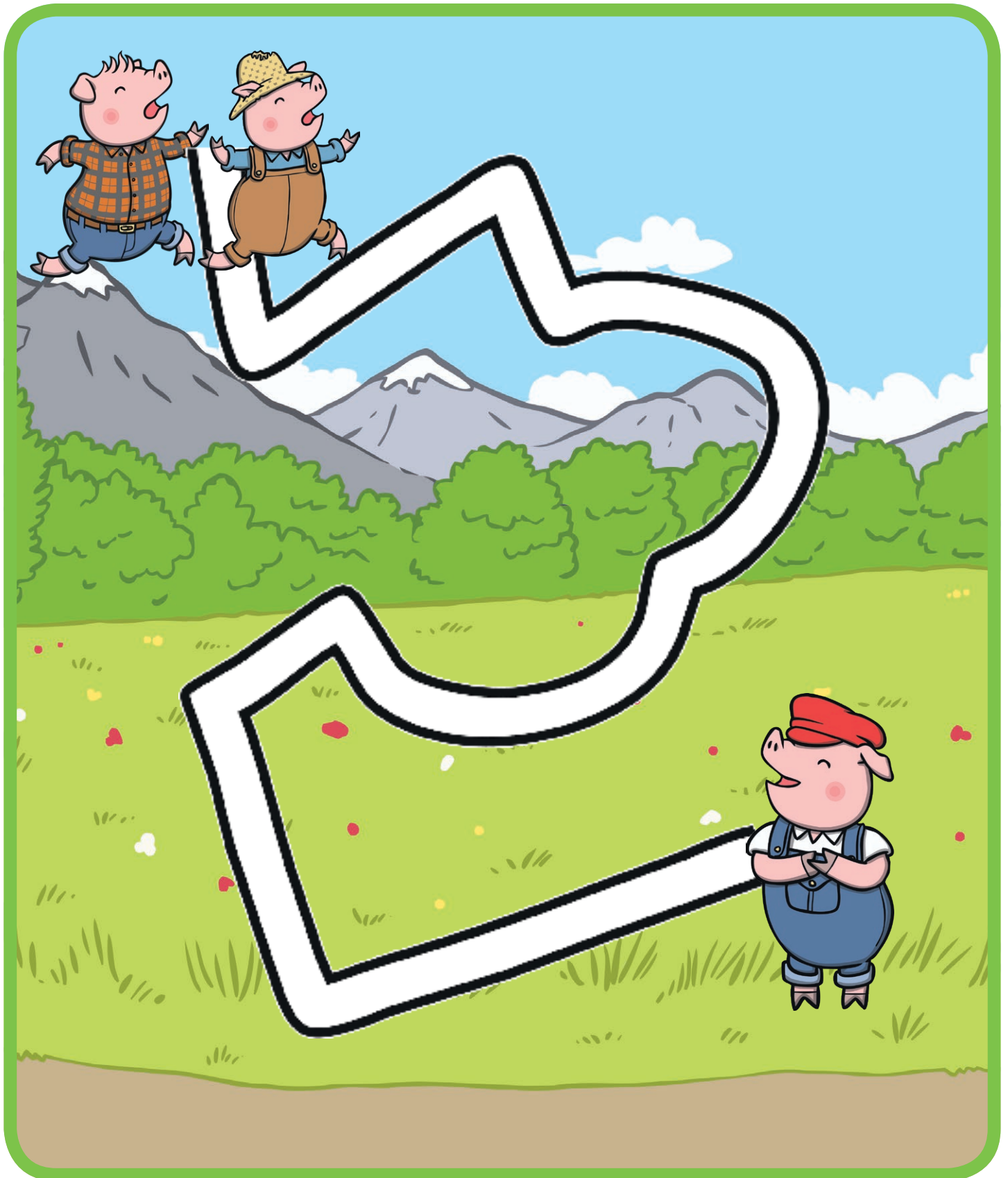
The Three Little Pigs

Use your pencil to draw a line to connect the Big Bad Wolf and the stick house. Try to stay in the middle of the path.



The Three Little Pigs

Use your pencil to draw a line to connect the Carpenter Pig and the Hayseed Pig to the Bricklayer Pig. Try to stay in the middle of the path.



The Three Little Pigs

Use your pencil to draw a line to connect the Big Bad Wolf and the brick house. Try to stay in the middle of the path.

